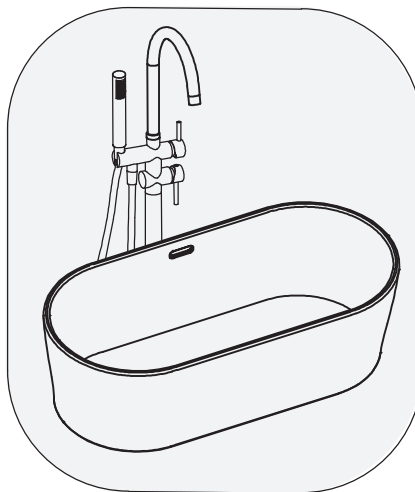


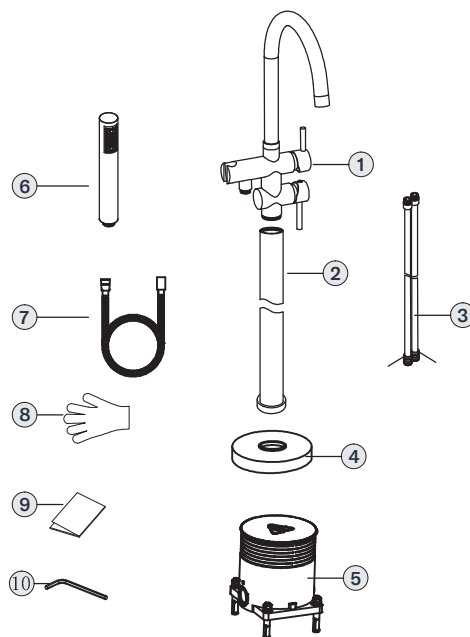
### FREE STANDING MIXER

- 1 PLEASE CHECK TO MAKE SURE NO PIECES ARE MISSING. CONTACT YOUR LOCAL DISTRIBUTOR IF THERE ANY MISSING PARTS.

SEE THE DRAWINGS AS BELOW:

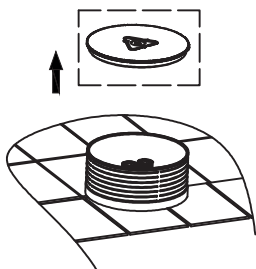


No	Name	Quantity
1	body assembly	1
2	straight tube	1
3	inlet pipe	2
4	escutcheon	1
5	embeded box	1
6	hand shower	1
7	shower hose	1
8	gloves	1
9	instructions	1
10	hexagon screw	1

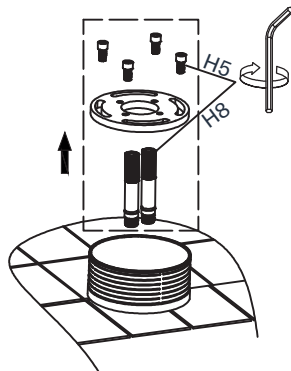


- 2 TO GUARANTEE THE CORRECT FUNCTIONING AND WATER FLOW, MAKE SURE THAT THE PIPES HAVE BEEN FLUSHED CORRECTLY, REMOVING ALL RESIDUES OF MUD AND SAND.
- 3 THE HEIGHT OF YOUR BATH SHOULD MATCH WITH THE DIMENSION OF OUR FREE STANDING FAUCET.

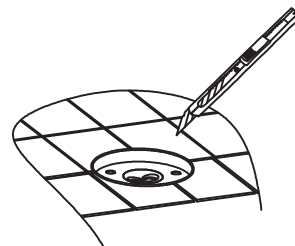
- 1** OPEN THE EMBEDDED BOX COVER.



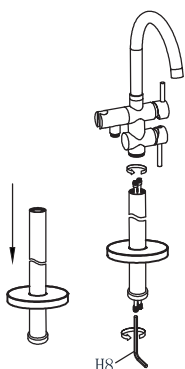
- 2** REMOVE THE PLATE AND PLUG USING THE HEXAGON SCREW.



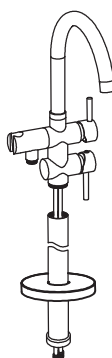
- 3** USING A CUTTER CUT AROUND THE BOX SO THAT IT IS FLUSH WITH THE SURFACE.



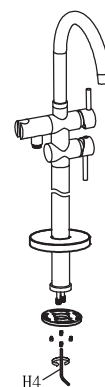
- 4** INSTALL THE ESCUTCHEON TO THE UPPER PART OF THE TUBE; CONNECT THE INLET PIPES TO THE BODY USING THE HEXAGON SCREW.



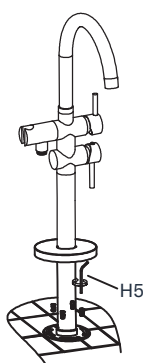
- 5** CONNECT THE STRAIGHT TUBE TO THE BODY.



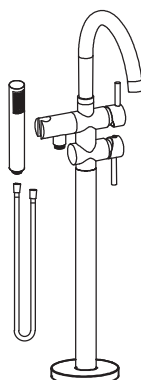
- 6** CONNECT THE PLATE TO THE TUBE USING THE HEXAGON SCREW.



- 7** CONNECT THE INLET PIPES OF THE EMBEDDED BOX; ADJUST THE POSITION OF THE SPOUT AND BATH; CONNECT THE PLATE INTO THE EMBEDDED BOX THROUGH THE PLATE SCREWS.



- 8** INSTALL THE HAND SHOWER AND SHOWER HOSE.



- 9** TOTAL ASSEMBLY PICTURE.

