



Acrylic Bathtub

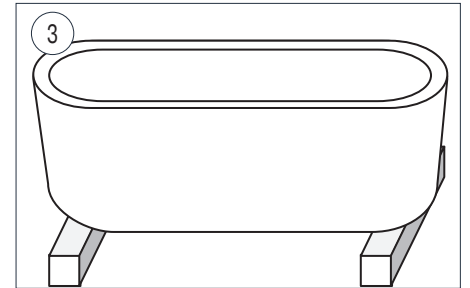
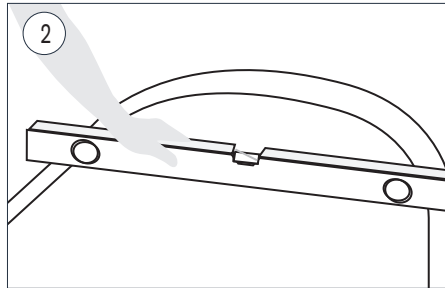
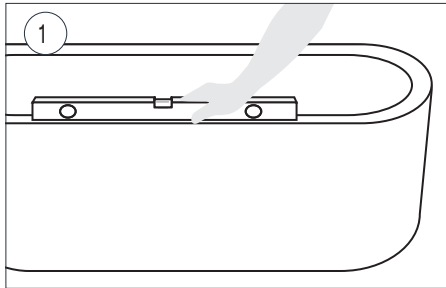
Installation instruction manual

BEFORE YOU START:

- ENSURE THAT THE FLOOR IS EVEN.
- THE WATER-OVERFLOW FITTING IS SUPPLIED WITH THE PRODUCT, HOWEVER OTHER ACCESSORIES LIKE THE SLIP JOINT AND ADAPTORS ARE NOT INCLUDED AND MUST BE PURCHASED SEPARATELY.
- BECAUSE OF THE TECHNICAL FEATURES OF THE PRODUCT, IT SHOULD BE USED ONLY WITH THE SUPPLIED WASTE-OVERFLOW OR SPECIFIC 3RD PARTY MODELS THAT HAVE BEEN TESTED AND APPROVED BY US.
- THE BATHTUB MUST BE CARRIED IN THE UPSIDE-DOWN POSITION. DO NOT LIFT OR SUPPORT THE BATHTUB BY THE PANELS.
- PLACE THE BATHTUB BY RAISING IT UP 30" WITH 4X4 PEICES OF LUMBER SO YOU CAN HAVE ACCESS FROM THE BOTTOM OF THE BATHTUB.
- FOR CLEANING OF THE ACRYLIC BATHTUB LOOK AT OUR ACRYLIC BATHTUB MAINTENANCE MANUAL.



INSTALLATION SEQUENCE:

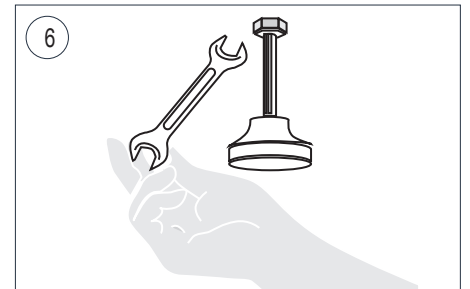
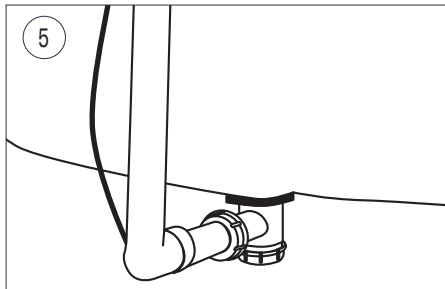
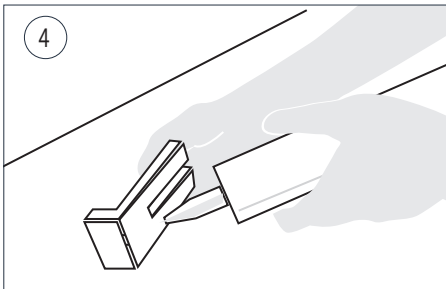


• **1-2:** THE BATHTUB IS LEVELED VIA A WATER LEVEL AT THE INTENDED LOCAL INSTALLATION AREA.

• **3:** PLACE THE BATHTUB BY RAISING IT UP 30" WITH 4X4 PEICES OF LUMBER SO YOU CAN HAVE ACCESS FROM THE BOTTOM OF THE BATHTUB.

IMPORTANT NOTE: DURING THE INSTALLATION, THE BATHTUB SHOULD NOT BE TURNED ON ITS SIDE TO PREVENT ITS WEIGHT FROM DEFLECTING ITS MONOBLOC SIDES. THIS IS WHY IT IS IMPORTANT TO USE SUPPORTS TO RAISE THE BATHTUB ABOVE THE FLOOR.

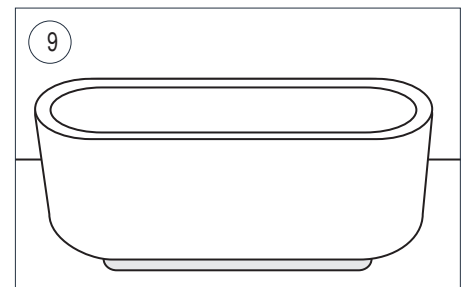
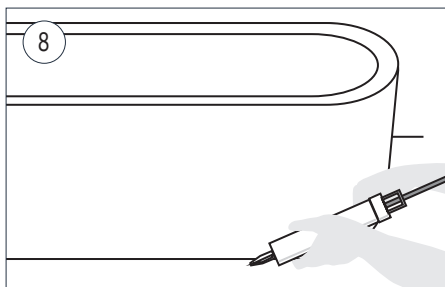
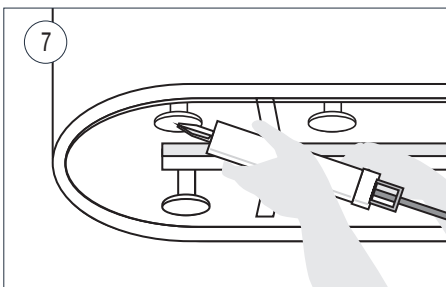
THIS WILL ALSO PROVIDE YOU WITH EASY ACCESS TO THE INTERNAL PLUMBING PARTS.



• **4:** THE MONOBLOC SIDES OF THE BATHTUB TOUCHING THE FLOOR SHOULD BE MARKED.

• **5:** THE WATER OUTLET PIPE SHOULD BE CONNECTED.

• **6:** FOOT LEVELING LOCK NUTS ARE ADJUSTED.



• **7:** SILICONE IS APPLIED TO THE FEET OF THE BATHTUB THAT STANDS ON THE FLOOR.

• **8:** WHEN THE INSTALLATION IS COMPLETED, THE BATHTUB IS TAKEN DOWN FROMN THE SUPPORTS (IE 2 X 4X4'S).

IF NECESSARY, INSTALLATION IS COMPLETD BY APPLYING SILICONE AT SEVERAL POINTS BETWEEN THE BOTTOM PANEL AND FLOOR.

• **9:** ANY REMAINING PROTECTIVE PACKAGING SHOULD BE REMOVED ONLY AFTER THE BATHTUB INSTALLATION AND OTHER CONSTRUCTION WORK IN THE BATHROOM IS FULLY FINISHED.