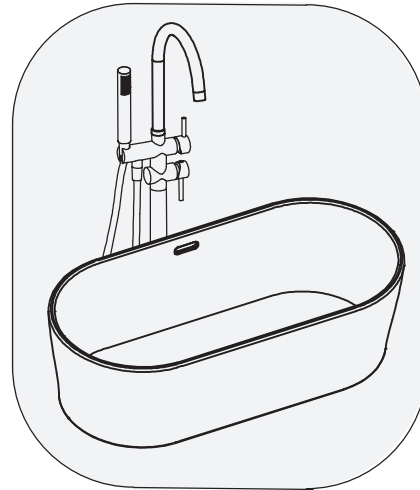


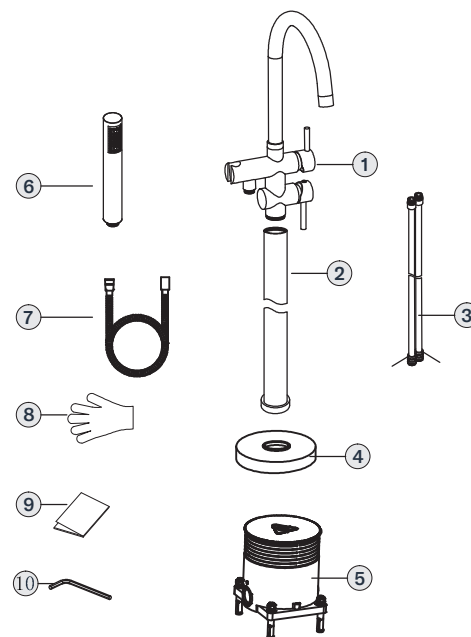
## FREE STANDING MIXER

- 1** PLEASE CHECK TO MAKE SURE NO PIECES ARE MISSING. CONTACT YOUR LOCAL DISTRIBUTOR IF THERE ANY MISSING PARTS.



SEE THE DRAWINGS AS BELOW:

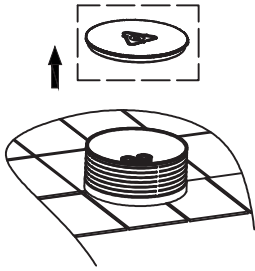
No	Name	Quantity
1	body assembly	1
2	straight tube	1
3	inlet pipe	2
4	escutcheon	1
5	embedded box	1
6	hand shower	1
7	shower hose	1
8	gloves	1
9	instructions	1
10	hexagon screw	1



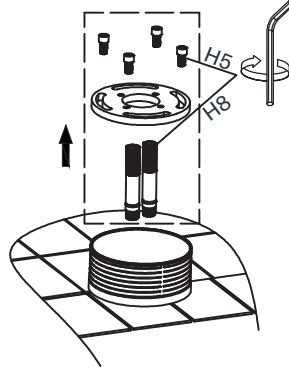
- 2** TO GUARANTEE THE CORRECT FUNCTIONING AND WATER FLOW, MAKE SURE THAT THE PIPES HAVE BEEN FLUSHED CORRECTLY, REMOVING ALL RESIDUES OF MUD AND SAND.

- 3** THE HEIGHT OF YOUR BATH SHOULD MATCH WITH THE DIMENSION OF OUR FREE STANDING FAUCET.

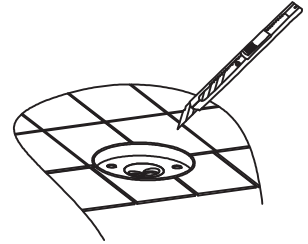
**1** OPEN THE EMBEDDED BOX COVER.



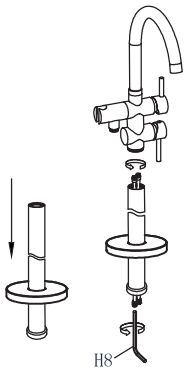
**2** REMOVE THE PLATE AND PLUG USING THE HEXAGON SCREW.



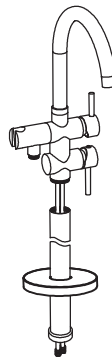
**3** USING A CUTTER CUT AROUND THE BOX SO THAT IT IS FLUSH WITH THE SURFACE.



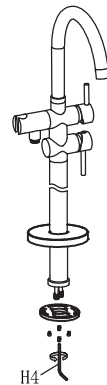
**4** INSTALL THE ESCUTCHEON TO THE UPPER PART OF THE TUBE; CONNECT THE INLET PIPES TO THE BODY USING THE HEXAGON SCREW.



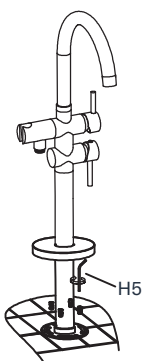
**5** CONNECT THE STRAIGHT TUBE TO THE BODY.



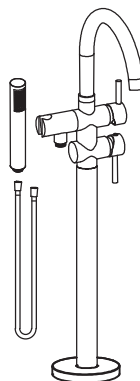
**6** CONNECT THE PLATE TO THE TUBE USING THE HEXAGON SCREW.



**7** CONNECT THE INLET PIPES OF THE EMBEDDED BOX; ADJUST THE POSITION OF THE SPOUT AND BATH; CONNECT THE PLATE INTO THE EMBEDDED BOX THROUGH THE PLATE SCREWS.



**8** INSTALL THE HAND SHOWER AND SHOWER HOSE.



**9** TOTAL ASSEMBLY PICTURE.

