

> SIZES IN MM.



#### TECHNICAL INFORMATION

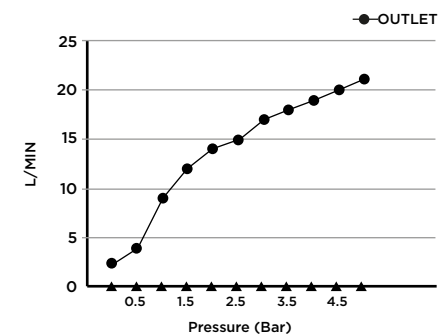
COLLECTION: PLUMBING /HEALTH SPRAY  
 PRODUCT TYPE: HEALTH SPRAY R45  
 MATERIAL: BRASS  
 CONNECTION SIZE: 1/2"  
 WATER PRESSURED: 0.2-0,5 BAR  
 RMP: 1.0 BAR LP

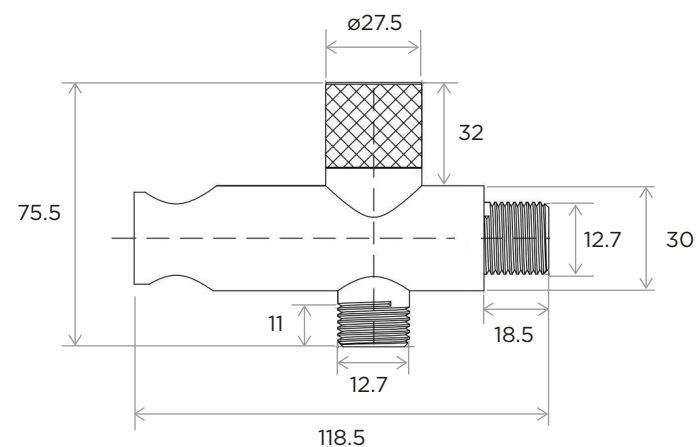
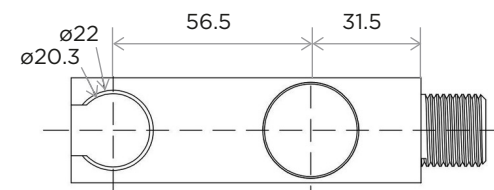
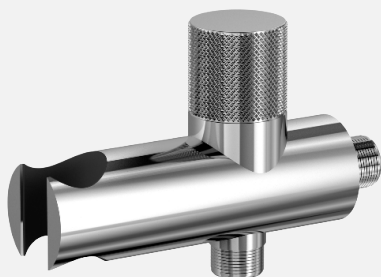
#### CODE & COLOUR

**HSP-R45**  
 Please refer to the product  
 details on our website  
 for colour references:  
[iwandw.com](http://iwandw.com)

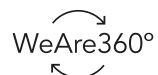
#### SCOPE OF DELIVERY

HEALTH SPRAY · BRASS BODY · ONE SPRAY FUNCTION.  
 HOLDER, PVC HOSE 1.2m & ROUND ANGLE VALVE INCLUDED  
 INSTALLATION GUIDE · CARE & MAINTENANCE MANUAL





> SIZES IN MM.



#### TECHNICAL INFORMATION

COLLECTION: ANGLE VALVE  
PRODUCT TYPE: A/V H ROUND  
MATERIAL: BRASS  
CONNECTION SIZE: 1/2"  
WATER PRESSURED: 0.2-0,5 BAR  
RMP: 1.0 BAR LP

#### CODE & COLOUR

AVH-ROU  
Please refer to the product  
details on our website  
for colour references:  
[iwandw.com](http://iwandw.com)

#### SCOPE OF DELIVERY

ANGLE VALVE  
BACK PLATE  
CARE & MAINTENANCE MANUAL

