

> SIZES IN MM.



CODE & COLOUR

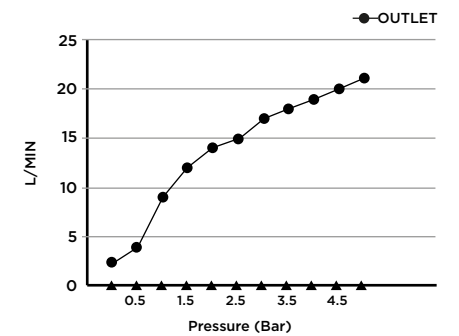
- HSP-R45-POL ● POLISHED CHROME
- HSP-R45-BRU ● BRUSHED NICKLE
- HSP-R45-SS ● STAINLESS STEEL
- HSP-R45-GRA ● GRAPHITE
- HSP-R45-BLA ● BLACK MATT CHROME
- HSP-R45-ROS ● ROSE GOLD
- HSP-R45-GOL ● GOLD
- HSP-R45-BRA ● BRASS
- HSP-R45-ABR ● ANTIQUE BRASS

SCOPE OF DELIVERY

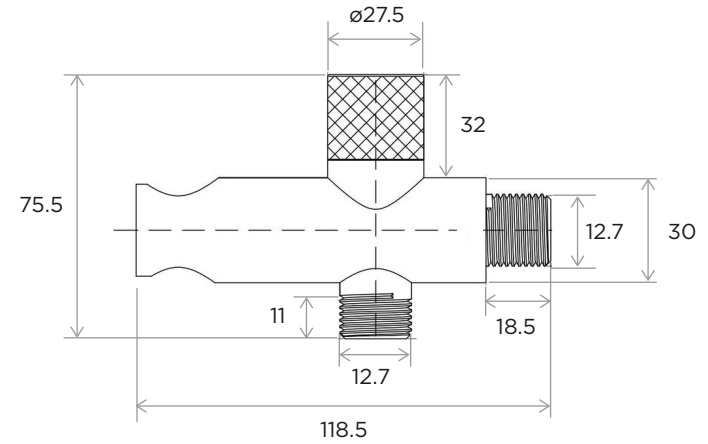
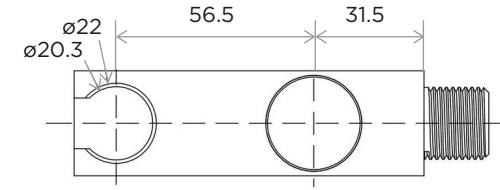
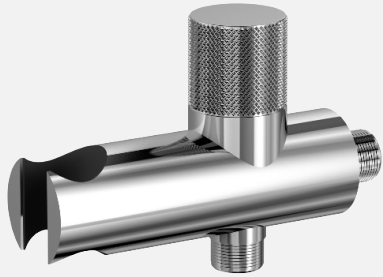
HEALTH SPRAY · BRASS BODY · ONE SPRAY FUNCTION.  
HOLDER, PVC HOSE 1.2m & ROUND ANGLE VALVE INCLUDED  
INSTALLATION GUIDE · CARE & MAINTENANCE MANUAL

TECHNICAL INFORMATION

COLLECTION: PLUMBING /HEALTH SPRAY  
PRODUCT TYPE: HEALTH SPRAY R45  
MATERIAL: BRASS  
CONNECTION SIZE: 1/2"  
WATER PRESSURED: 0.2-0,5 BAR  
RMP: 1.0 BAR LP



iwandw.com



> SIZES IN MM.



CODE & COLOUR

AVH-ROU-POL	●	POLISHED CHROME
AVH-ROU-BRU	●	BRUSHED NICKLE
AVH-ROU-SS	●	STAINLESS STEEL
AVH-ROU-GRA	●	GRAPHITE
AVH-ROU-BLA	●	BLACK MATT CHROME
AVH-ROU-ROS	●	ROSE GOLD
AVH-ROU-GOL	●	GOLD
AVH-ROU-BRA	●	BRASS
AVH-ROU-ABR	●	ANTIQU BRASS

SCOPE OF DELIVERY

ANGLE VALVE  
BACK PLATE  
CARE & MAINTENANCE MANUAL

TECHNICAL INFORMATION

COLLECTION: ANGLE VALVE  
PRODUCT TYPE: A/V H ROUND  
MATERIAL: BRASS  
CONNECTION SIZE: 1/2"  
WATER PRESSURED: 0.2-0,5 BAR  
RMP: 1.0 BAR LP

