

> SIZES IN MM.



TECHNICAL INFORMATION

COLLECTION: WELLNESS / SHOWER CONTROL
PRODUCT TYPE: AVA 2 ROUND
WALL MOUNTED VALVE
TURN DIVERTER FOR 2 OUTLES
MATERIAL: BRASS
CONNECTION SIZE: 1/2"
WATER PRESSURE : 0.2-5 BAR
RMP: 1.0 BAR MP

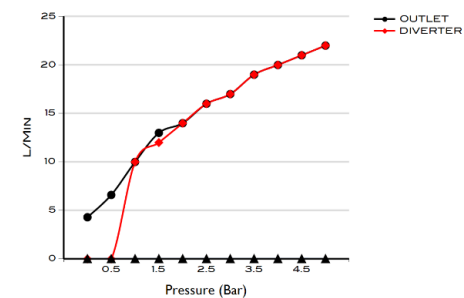
CODE & COLOUR

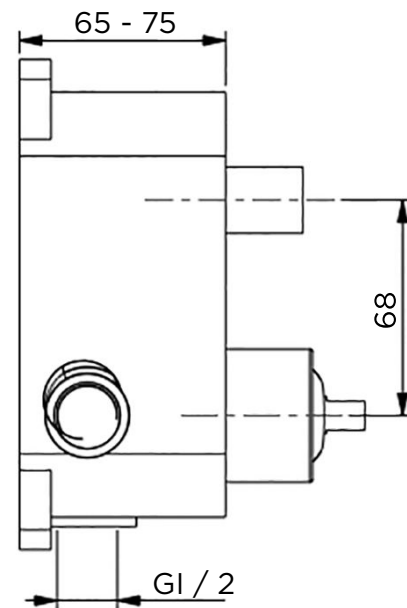
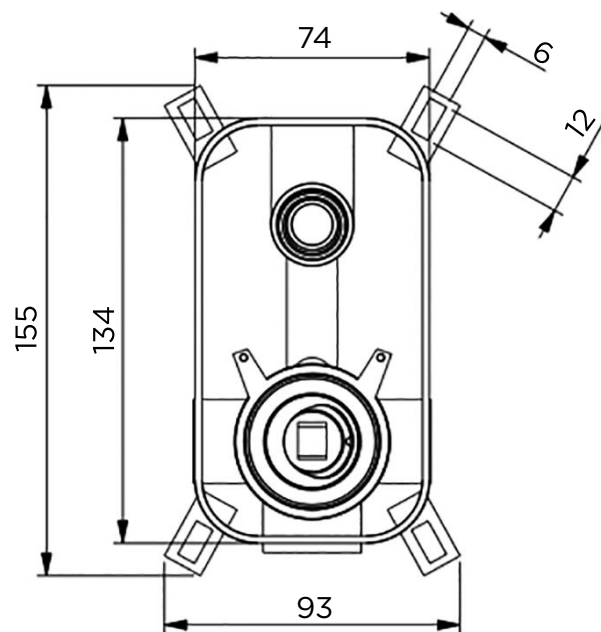
AV2-S/C

Please refer to the product
details on our website
for colour references:
iwandw.com

SCOPE OF DELIVERY

VALVE · EXTERNAL PLATE
HANDLE · FIXING KIT · DIVERTER HANDLE
INSTALLATION GUIDE
CARE & MAINTENANCE MANUAL





PRODUCT

COLLECTION

REFERENCE

Shower Controls

Wellness

Ava 2 Round / Universal Box